

# TURNBUCKLE BODIES

Open and Closed design

## Benefits

Stainless steel grade 316 closed body with Aluminium Bronze thread inserts for sizes 8mm to 26mm.

All raw materials used to manufacture these parts are certified to EN10204 3.1b

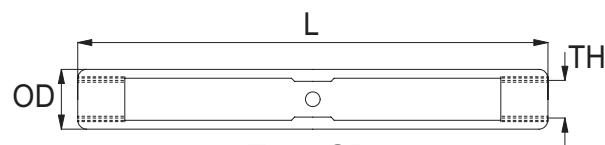
Traditionally, turnbuckle bodies are manufactured by forging a soft bronze to produce the desired shape.

Our unique GT design lets us machine the bodies from high grade materials.

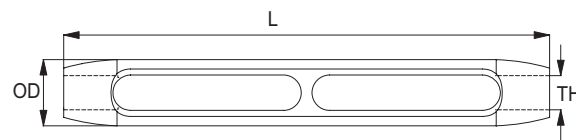
Using this process has allowed us to reduce the weight by 20% without reducing the Strength.

Inspection certificate BS EN 10204 3.1B available on request (This must be specified at the time of order).

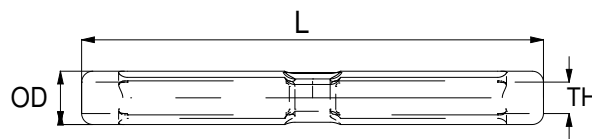
High quality finish and excellent polish



Type CB



Type HT



Type GT



Closed and Open Style Turnbuckle Bodies										
Thread UNF	Nominal Wire Size	OD	L	Weight	OD	L	Weight	OD	L	Weight
		Type CB			Type HT			Type GT		
1/4" unf	3mm	9.5mm	86mm	20g	*	*	*	10.9mm	103mm	34g
5/16" unf	4mm	12mm	98mm	36g	*	*	*	13.8mm	119mm	62g
3/8" unf	5mm	15mm	124mm	72g	*	*	*	15.8mm	147mm	98g
7/16" unf	6mm	17mm	136mm	102g	*	*	*	18.8mm	163mm	148g
1/2" unf	7mm	19mm	164mm	164g	*	*	*	21.9mm	203mm	252g
5/8" unf	8mm/10mm	25.4mm	210mm	454g	*	*	*	28.0mm	228mm	508g
3/4" unf	12mm	28.5mm	248mm	626g	*	*	*	31.6mm	265mm	736g
7/8" unf	14mm	35mm	278mm	955g	44.2mm	316mm	1252g	37.7mm	310mm	1149g
1" unf	16mm	38mm	332mm	1264g	50.5mm	361mm	2257g	43.6mm	356mm	1875g
1 1/8" unf	19mm	44.5mm	369mm	2250g	56.8mm	406mm	3202g	49.5mm	401mm	2731g
1 1/4" unf	22mm	50.8mm	400mm	3290g	63.1mm	451mm	4269g	53.8mm	443mm	3425g
1 3/8" unf	26mm	54mm	460mm	4337g	69.5mm	496mm	5846g	59.8mm	476mm	4766g

Larger bodies can be manufactured to order