

STAINLESS STEEL CLEVIS PIN

Including Split Pins and Split Rings

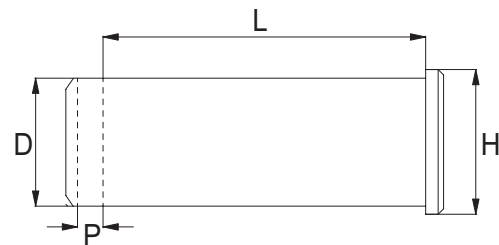
Benefits

All Hi-MOD products are produced to a high degree of quality control, using modern lean manufacturing processes, resulting in a reliable and consistent product

Double headed clevis pins are also available - please refer to our architectural specification sheets for dimensions.

Inspection certificate BS EN 10204 3.1B available on request (This must be specified at the time of order).

High quality finish and excellent polish



Stainless Steel Clevis Pins

Product Code	D	P	H	L	Weight	Pin/Ring
CP06	5.9mm	2.0mm	8.0mm	15.0mm	4g	SP-07/SR1
CP08	7.9mm	2.2mm	9.5mm	18.4mm	10g	SP-07/SR2
CP10	9.5mm	2.6mm	11.1mm	22.5mm	16g	SP-01
CP11	11.0mm	2.8mm	12.7mm	25.7mm	22g	SP-01
CP12	11.9mm	3.0mm	14.3mm	28.9mm	32g	SP-02
CP14	13.9mm	3.5mm	16.0mm	35.2mm	50g	SP-02
CP16	15.9mm	3.5mm	19.0mm	38.4mm	72g	SP-03
CP19	18.8mm	4.2mm	22.2mm	44.8mm	126g	SP-03
CP22	22.0mm	4.2mm	25.4mm	51.1mm	190g	SP-03
CP25	25.3mm	5.1mm	28.6mm	63.8mm	298g	SP-04
CP28	28.0mm	5.1mm	31.7mm	70.2mm	394g	SP-04
CP32	31.8mm	6.5mm	34.9mm	76.5mm	550g	SP-05
CP35	34.8mm	6.5mm	38.1mm	82.8mm	718g	SP-05

Larger Sizes Available Upon Request

Split Pins and Split Rings (A2)

Stainless Steel Split Pins in A2

Product Code	Size	Product Code	Size
SP-01	3/32 x 3/4	SP-08	1/4 x 3
SP-02	1/8 x 1	SP-09	3/32 x 1/2
SP-03	5/32 x 1 1/4	SP-10	3/32 x 1
SP-04	3/16 x 1 1/2	SP-11	1/8 x 1 3/4
SP-05	1/4 x 2	SP-12	4mm x 63mm
SP-06	1/8 x 1 1/2	SP-13	3/8 x 3 1/2
SP-07	1/16 x 1/2		

Stainless Steel Split Rings in A2

Product Code	Size	Product Code	Size
SR-1	10mm x 1mm	SR-6	25mm x 1.2mm
SR-2	14mm x 1mm	SR-7	24mm x 2mm
SR-3	3/4 x 1mm	SR-8	11mm x 1mm
SR-4	7/8 x 1.2mm	SR-9	5/8 x 1mm
SR-5	22mm x 1mm		