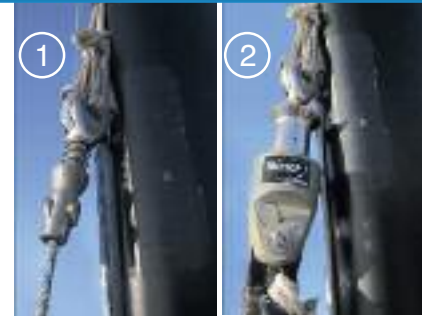
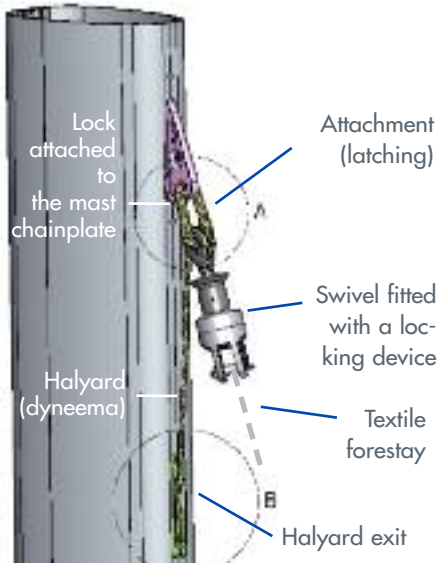




Alternatively, the halyard locking device can be fitted on a mast chain plate. Among those external locks we distinguish two types : the two-in-one locking swivels and the locks attached by a loop.

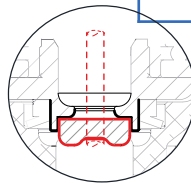
EXTERNAL LOCKS : SWIVEL & LOCK

>> Swivel & lock :
Double function, compact and light



>> Swivel & lock technical features

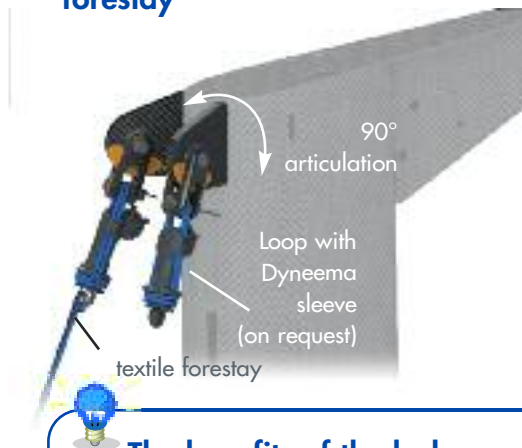
Parameters / Lock model* (= working load)	2T	7T	9T	9T+
Kevlar Equivalent wire	8T	20T	27T	Please contact us
ROD Equivalent	#10	#30	#40	



A Dogbone blocks the halyard in the swivel



>> Polyvalent interface with the forestay



The benefits of the lock :



"Thanks to the lock, we can lower the furled staysail in order to tack or jibe easily, or even to reduce windage. Moreover, the locked staysail presents various advantages in comparison with a fixed forestay : sail furling, tight luff, easy handling. With the lock, hoisting and lowering the staysail is quick and so easy".

Halvard Mabire, skipper of the Class 40' Campagne2France and Facnor technical partner

EXTERNAL LOCKS WITH LOOP BODY

>> Fixed locking device and mobile pin :

- Easy & simply fitted : it can be fixed onto the head attachment with an articulated device (toggle, latching, Unibal ball or others).
- In this case, a small diameter sheave is integrated in the locking system. The halyard can then run down inside or outside the mast.



16 tons lock for Maricha III (147') Code zero

>> External lock technical features

Parameters / Lock model (= working load)	3 T	5 T	7 T	10 T	12 T	16 T	24 T	30 T+
Kevlar Equivalent wire	10 T	14 T	20 T	30 T	40 T	54 T	75 T	100 T
ROD Equivalent	#12	#17	#22	#40	#48	#60	#76 #90	#115 #150