

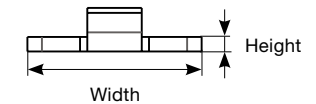


# TRACK SYSTEM

# 22 30 42

## APPLICATIONS

- The standard track is used for cars adjusted with control lines and for self-tacking systems.
- The pinstop track is used for pinstop genoa cars. Pinstop is a spring loaded plunger fixing the genoa car on the purpose made track. The car is easy to relocate when not under load.
- The high beam track is used for unsupported main sheet systems and self tacking systems.



## UPGRADING TO NEW TRACKS

The sliding bolt track is ideal for retrofit upgrades. The fasteners can be located according to the existing bolt holes. This track is also used for applications where the bolts are to be hidden.

### SYSTEM 22



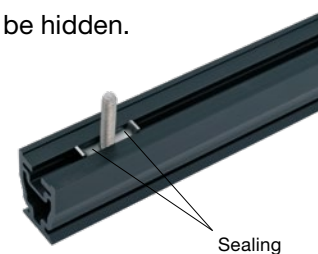
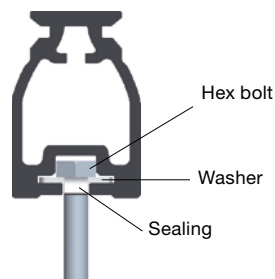
### SYSTEM 30



### SYSTEM 42



Track size selection is determined by boat size.



*The bolt (DIN standard\*) is inserted in the track with the washer fitted. Sealing compound is applied between the flanges of the washer. The track turns up-side-down and is then mounted on deck.*

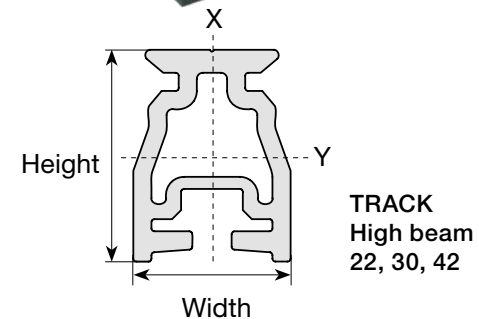
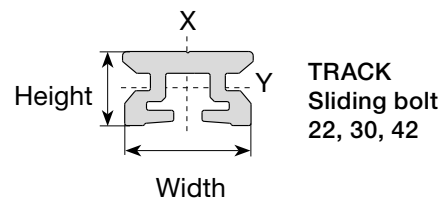
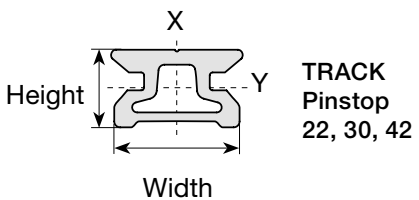
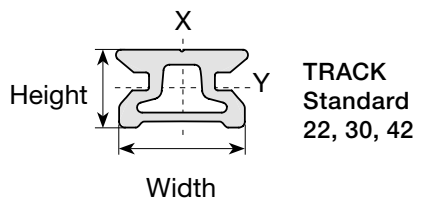
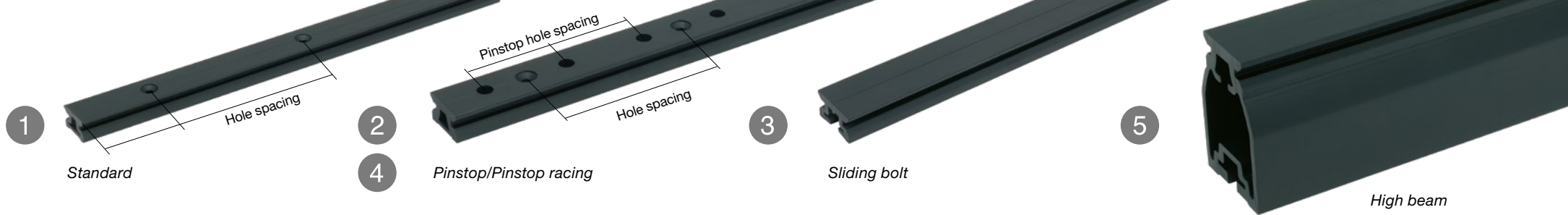
\* N.B. Use ISO standard for high beam 42.

For information about length of unsupported track, see page 108.



## SEALING WASHER

Art. no.	Description	Width x height (mm)	Track Art. no.
1 164-481	Washer M5 Sliding bolt	10x1.2	442-003-0X
2 164-482	Washer M6 Sliding bolt	18x1.6	442-011-0X 443-003-0X
3 164-483	Washer M8 Sliding bolt	24x2	443-011-0X 444-003-0X
4 164-484	Washer M10 Sliding bolt	30x2.5	444-011-0X



**TRACK 22**

**TRACK 30**

**TRACK 42**

	1	2	3	4	5	1	2	3	5	1	2	3	5
Length mm	Standard Art. no.	Pinstop Art. no.	Sliding bolt Art. no.	Pinstop Racing Art. no.	High beam Art. no.	Standard Art. no.	Pinstop Art. no.	Sliding bolt Art. no.	High beam Art. no.	Standard Art. no.	Pinstop Art. no.	Sliding bolt Art. no.	High beam Art. no.
300	-	-	-	442-004-01	-	-	-	-	-	-	-	-	-
500	-	-	-	442-004-03	-	-	-	-	-	-	-	-	-
1000	442-001-01	442-002-01	-	442-004-04	-	443-001-01	443-002-01	-	-	-	-	-	-
1200	442-001-02	442-002-02	-	-	-	443-001-02	443-002-02	-	-	-	-	-	-
1500	442-001-03	442-002-03	-	-	442-011-03	443-001-03	443-002-03	-	443-011-03	444-001-03	444-002-03	-	-
2000	442-001-04	442-002-04	442-003-04	-	442-011-04	443-001-04	443-002-04	443-003-04	443-011-04	444-001-04	444-002-04	444-003-04	444-011-04
2500	442-001-05	442-002-05	-	-	-	443-001-05	443-002-05	-	-	444-001-05	444-002-05	-	444-011-05
3000	442-001-06	442-002-06	442-003-06	-	-	443-001-06	443-002-06	443-003-06	-	444-001-06	444-002-06	444-003-06	-
3500	442-001-07	442-002-07	-	-	-	443-001-07	443-002-07	-	-	444-001-07	444-002-07	-	-
4000	442-001-08	442-002-08	442-003-08	-	442-011-08	443-001-08	443-002-08	443-003-08	443-011-08	444-001-08	444-002-08	444-003-08	444-011-08
6000	442-001-09	442-002-09	-	-	-	443-001-09	443-002-09	-	-	444-001-09	444-002-09	444-003-09	-
Weight Kg/m	0.43		0.45	0.43	1.07	0.89			2.62	1.65			4.47
Width/height mm	22/13				26/35	30/17			42/62	42/22			58/85
WxWy cm <sup>3</sup>	0.57/0.38		0.64/0.36	0.57/0.38	2.10/2.76	1.66/1.07		1.59/0.92	8.4/12.9	4.47/2.62		4.43/2.35	19.2/33
lxly cm <sup>4</sup>	0.63/0.28		0.70/0.27	0.63/0.28	2.73/4.83	2.48/0.99		2.38/0.88	17.7/42.8	9.39/3.11		9.31/2.88	55.8/147
Screw size*	M5				M6	M6			M8	M10		M8	M10
Pinstop spacing, c-c (mm)	-	50	-	25	-	-	50	-	-	-	50	-	-
Hole spacing, c-c (mm)	100		max 100	100	max 100, see USL page 106	100		max 100	max 100, see USL page 106	100		max 100	max 100, see USL page 106

\*Fasteners not included.

Track ends may be unanodized. For curved tracks, please download enquiry form 595-952-E from [www.seldenmast.com](http://www.seldenmast.com).